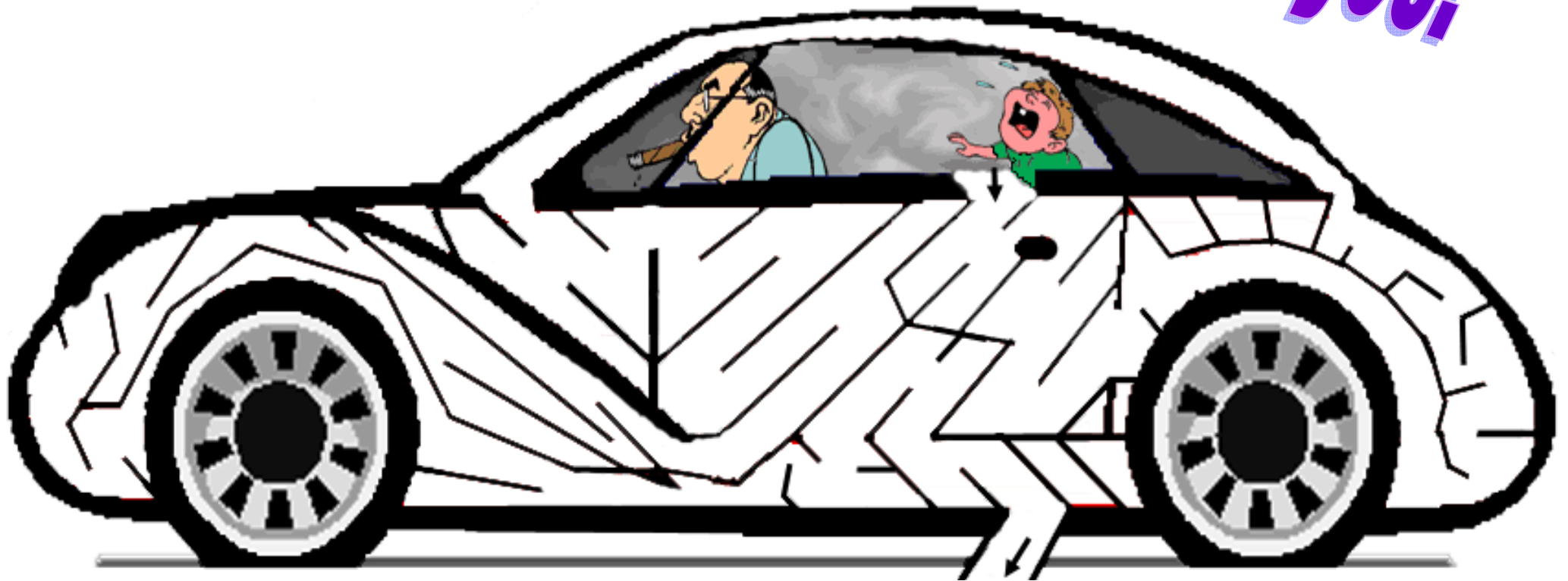


Help the baby find a way to get out of the smoke filled car! Some places have a law which makes it illegal to smoke in a car if there are children in the car too. Encourage your government to do the same.

Smoke Gets in My Eyes!



Smoking cigarettes, marijuana, cigars or a **pipe**, causes **pollution** in the **air**. People nearby are **passive** smokers because, although they do not choose to smoke, they are actually **breathing** in the smoke too.

Children are more likely to get **sick** from **tobacco** smoke with illnesses like **coughing** and **wheezing**, **pneumonia**, **bronchitis**, **ear** infections and **asthma**. They are often burnt when they play with matches or lighters.

If someone in your family smokes, ask if the house and **car** can be smoke-free zones. Move away from cigarette smoke or ask politely that they put out their cigarette and encourage them to quit smoking.

Some of the bad things in **cigarettes** or its smoke are **nicotine**, **tar**, **methanol**, **acetone**, and **carbon monoxide** which reduces the oxygen in blood - so people can develop **heart disease**. There are other poisons such as **arsenic**, **ammonia**, **DDT**, **cadmium**, **naphthalene**, and **cyanide**. Many of these chemicals can also cause **cancer**. Cancer can attack the **mouth**, **larynx**, **esophagus**, and **bladder**. **Lung** cancer and **emphysema** are common diseases caused by smoking and result in the **deaths** of many people in Australia. Even a baby in a pregnant mother may be **stillborn** if the mother smokes.

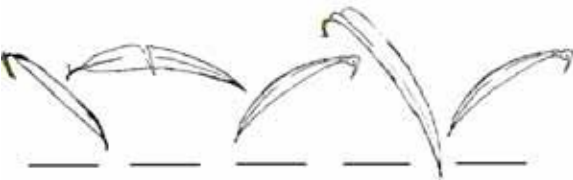
Look for the 39 **bold and underlined** words in this Word Find.. They go forwards, backwards, up and down, and diagonally.

WHAT'S IN A PIPE?

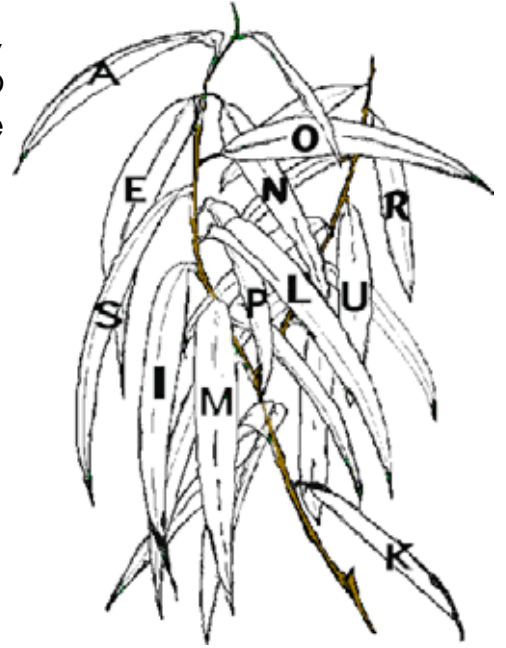
H	S	H	T	A	E	D	I	X	O	N	O	M	G	B
V	E	M	P	H	Y	S	E	M	A	E	L	U	N	G
L	N	A	S	U	G	A	H	P	O	S	E	H	I	G
J	O	B	R	O	N	C	H	I	T	I	S	C	K	N
L	T	L	Z	T	I	T	C	A	N	C	E	R	O	I
O	E	A	D	C	H	E	B	N	R	K	T	I	M	H
N	C	D	B	A	T	V	J	R	K	S	T	Y	S	G
A	A	D	L	D	A	I	N	O	M	U	E	N	P	U
H	I	E	E	M	E	S	I	B	L	A	R	N	D	O
T	N	R	D	I	R	S	C	L	H	M	A	O	I	C
E	O	N	I	U	B	A	O	L	T	H	G	B	S	C
M	M	M	N	M	B	P	T	I	U	T	I	R	E	A
U	M	D	A	W	X	I	I	T	O	S	C	A	A	B
L	A	R	Y	N	X	P	N	S	M	A	B	C	S	O
N	B	N	C	W	H	E	E	Z	I	N	G	I	E	T

This Australian animal rarely drinks in the wild, obtaining moisture from the gum leaves and also from the morning dew on these leaves. Its name comes from an aboriginal word that means "No drink."

Bushfires, urban development, felling of trees, and diseases means that their survival is put at risk. They don't like their air polluted either. Use the



letter code from the manna gum to match with the leaves in the code to



find out the name of the animal and then join the dots to find one in this tree—then colour it in.

Make your rule:

"No alcoholic drinks!"

**We all share the air -
Please don't smoke!**

