

?? Choices ??

Each of us has the freedom to make choices.

As we get older we find that we must make more and more choices - ones that will affect us for the rest of our lives. Our choices always have results called consequences. We must then learn to live with those consequences. If we make good choices we end up with good results.

You can make a good choice to stay away from alcohol and other drugs.

You can make a good choice to study well at school

You can make a good choice to be true in your friendships.

You can make a good choice to obey and respect your parents and teachers.

You can make a good choice to accept Jesus as your Savior.

All of these choices will lead to life.

Bad choices can bring sadness, sickness and death.

Bad choices will often bring slavery, that will take away your ability to choose well.

A choice to use drugs, may led to an addiction

A choice to drink alcohol, will ruin your mind, making it difficult to choose wisely,

Our bad choices can affect other people and bring consequences to them.

Determine to choose wisely and enjoy a happy and healthy life.

You have the power to choose! Make a good choice today!

Discover the choice that God asks us to make! Do the maths problems below. Then look at the code to determine the letter. Write the letter that matches the answer in the box.

A	B	C	D	E	F	G	H	I	L	M	N	O	P	R	S	T	U	V	W	Y
1	2	3	4	5	6	7	8	9	10	11	12	13	14	15	16	17	18	19	20	21

10 - 1	4 + 4	100 - 99	22 - 3	2 + 3	4 x 4	20 / 4	10 + 7	4 - 2	10 - 5	3 + 3	29 - 16	5 x 3	207 - 202

7 x 3	3 + 10	9 x 2	50 / 5	3 x 3	4 + 2	30 / 6	1 x 1	24 / 2	40 / 10	1 + 3	23 - 18	33 - 32	34 / 2	2 x 4

22 / 11	5 x 2	25 / 5	8 x 2	9 + 7	72 / 8	8 + 4	28 / 4	38 - 22	1 + 0	6 x 2	40 - 36	21 / 7	12 + 6	39 - 24	80 / 5	134 - 129	112 / 7

3 x 4	7 + 6	10 x 2	52 - 49	112 - 104	8 + 5	9 + 4	76 - 60	45 / 9	90 / 9	81 / 9	54 / 9	83 - 78	89 - 73	11 + 2

8 + 9	96 / 12	66 - 65	1008 - 991	84 / 4	52 - 39	126 / 7	11 / 11	84 / 7	13 - 9	98 - 77	104 / 8	6 x 3	90 / 6

48 - 45	56 / 7	81 - 72	30 / 3	101 - 97	135 / 9	22 - 17	72 / 6	170 - 159	93 - 92	147 / 7	70 / 7	107 - 98	95 / 5	59 - 54

Deuteronomy 30:19 NLT

Which Way Maze

Help the children to choose the right path.
Watch out for dead ends! Learn the memory
text at the bottom of the page!



Narcotics enslave

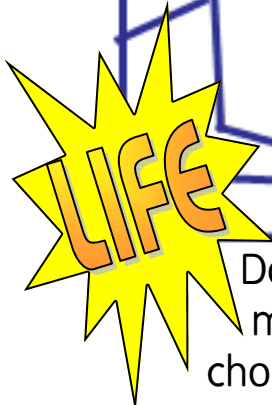
Crime imprisons

DRUNK DRIVERS are not survivors

Cigarettes kill

Drinking deceives

Drugs ruin



Don't you realise that whatever you choose to obey becomes your master? You can choose sin, which leads to death, or you can choose to obey God and receive his approval. *Romans 6:16 NLT*



Death!! Quick: Dial-a-Detective!

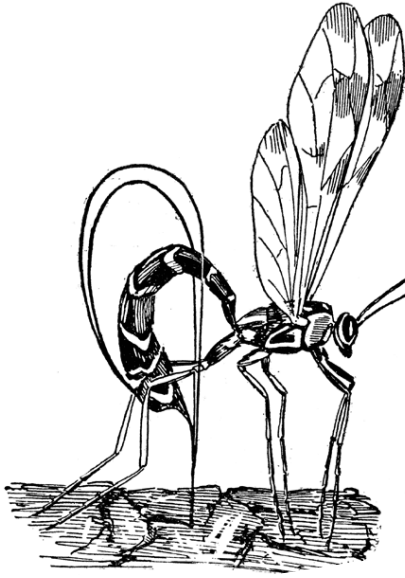


Did you know that the Ichneumon Fly or Wasp lays its egg on or near the larvae of other insects or spiders so that when it hatches, it feeds off the host insect eventually killing it?

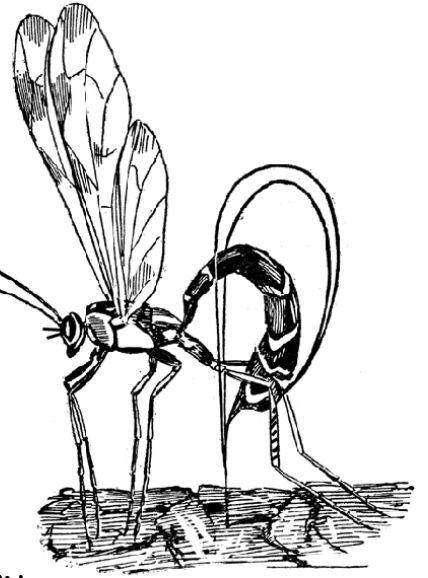
Clipart courtesy FCIT from <http://etc.usf.edu/clipart>

Find the 10 differences in the two pictures of the Ichneumon Wasp

Did you know that the Ichneumon Wasp has a long tube for laying its eggs which it uses to bore deeply into trees. It locates the larvae inside the tree and lays its egg on or next to them?



Did you know that taking drugs makes you a slave?



Did you know that many children & youth choose to use alcohol and drugs, which eventually, like the Ichneumon larvae, brings death and destruction?

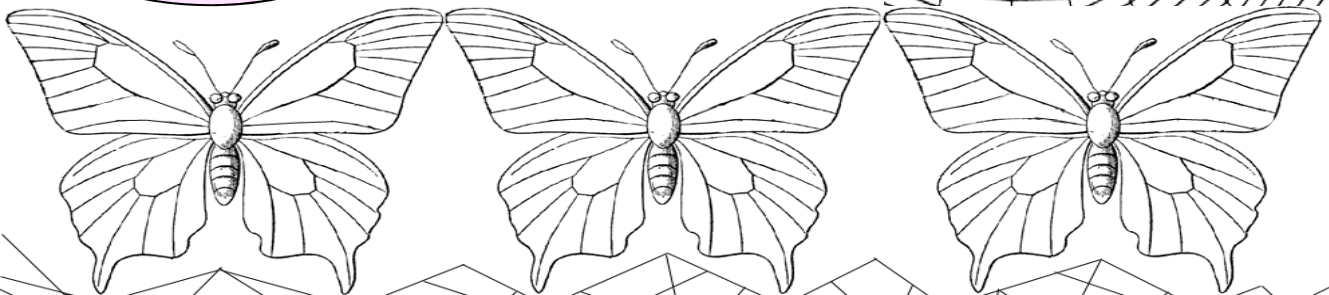
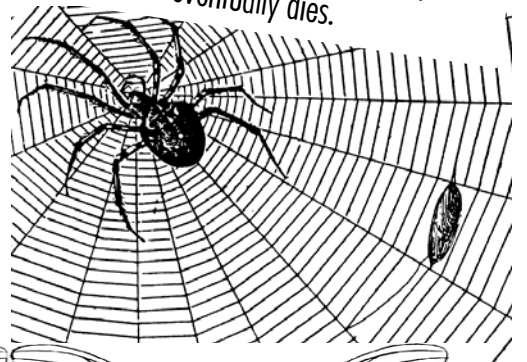
Did you know that the Ichneumon larva will sometimes feed on the pupa of other insects, using its casing for its own pupa stage deceiving you into thinking it is the host insect and then emerging from it after destroying the host.

Did you know that marijuana gradually destroys your life, and takes away your ability to make wise decisions?

Did you know that the Ichneumon larva sometimes hooks its little teeth into the back of some spiders, sucking the vital juices from it until it eventually becomes too weak to hunt. The larva eats it alive, feeding on all the other organs and leaving the central nervous system till last, when the spider eventually dies.

You are not like the spider or insect larvae - *You have a choice!*
Colour the shapes under the butterflies that have dots in them in black and then beautifully colour the butterflies. What is the hidden message?

Did you know that LSD, PSP, angel dust or "magic mushrooms" can cause a "bad trip" where people see things that are not really there. This is called a hallucination and can be very frightening, causing injury to the person as they try to flee from something that is not real.



CHOOSE LIFE NOT DRUGS